



13TH – 14TH

SEPTEMBER 2025



FOLLOW THE TRAIL

SOUTH COAST
ARTS > TRAIL

TE ARA TOI O TE ĀKAU TONGA

Welcome

to the South Coast Arts Trail 2025



Nau mai, haere mai

The South Coast Business and Promotion Association takes great pleasure in welcoming you to the South Coast Arts Trail, the annual celebration of creativity, community, and place. Now in its fourth year the theme for 2025 is "Creativity around every corner", encouraging you to explore further afield and discover works by over 80 established and emerging artists.

Across the weekend of 13–14 September, the south coast of Wellington, from Ōwhiro Bay to Island Bay, Berhampore, and Houghton Bay – will come alive with art in all its forms. From painting, drawing, sculpture, textiles, ceramics, installations, and photography to illustration, printmaking, talks, and tours, there is something for everyone to enjoy.

One of the unique features of the South Coast Arts Trail is its focus on youth, with art exhibited by students from local schools and early education centres. We're proud to have artists from ages 3 to 93 taking part this year, making this a true celebration of creativity across generations.



...enjoy our region through a self-guided journey, whether you walk, bike, scooter, or drive, and you'll discover not only art but also our vibrant cafés, shops, and welcoming community.

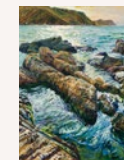
The South Coast Arts Trail invites everyone to enjoy our region through a self-guided journey, whether you walk, bike, scooter, or drive, and you'll discover not only art but also our vibrant cafés, shops, and welcoming community.

The South Coast Arts Trail is organised by local volunteers, and is only made possible through the generosity of our supporter, Wellington City Council and local sponsors, Island Bay New World, Empire Cinema & Eatery, Jodie Hanna Harcourts Team Group, The White Room Gallery, Natty, South Coast Arts Studio, Kiwi E-Cycle, Coucou, Flamingo and Parla along with individuals who have kindly donated.

Thank you for supporting our artists, our businesses, and our community. By joining us on the South Coast Arts Trail, you are part of the ongoing story of Wellington's South Coast, where art, people, and place come together in the most inspiring way.

ENJOY THE TRAIL!

The South Coast Business & Promotions Association
(Proud organisers of the South Coast Arts Trail)



COVER
Tidal Rock Pools
Island Bay
– oil on linen
© Michael McCormack

ISLAND BAY. WGN. 6023

SOUTH COAST ARTS TRAIL
SOUTH COAST ARTS TRAIL

13 – 14 SEPTEMBER 2025

Supported by

Absolutely Positively
Wellington City Council

Me Heke Ki Pōneke

Gold sponsors



Jodie Hanna
Harcourts Team Group
Licensed Agent REAA 2008

Contents

Michael McCormack	3	South Coast Arts Trail – MAP	18
Our Lady’s Home of Compassion	3	Dan Wilkinson Creative	20
Chris McKeown	4	Wellington South Baptist Church	20
Davina Ewing	4	Seema Singh & Pritika Narayan	21
Twisted+	5	St Hilda’s Anglican Church Island Bay	21
Nicole Miller	5	Jeannette Troon	22
Edith Diggle	6	Helen Williamson	23
Alina Manko	7	Charlie Cristi	24
St Sava Serbian Orthodox Church	7	Judith Maxim Art	24
Island Bay Kindergarten	8	Lesley Moyes	25
Nicola Jackson	8	Alison Hogg	25
Claire Jaycock	9	Katie Williams	26
Emma Smith	9	Amber Crossland	27
Neil Doherty	10	Noon Kasemsan	27
Mia Vinaccia	11	Juliet Best	28
Andy Spain	11	Beata Kozłowska	28
Nicola Shuttleworth & Simon Morris	12	Neal Palmer	29
Zoë Isaacs	13	Christine Strang	29
Sarah Nightingale	13	Deryn Hardie Boys	30
Brigid Jamieson + Penny Wyatt	14	Ruth Copeland	30
Kees Busch	15	Ian Logan	31
St Francis de Sales School	15	JoElle Gragilla	31
Joe Bleakley	16	Debbie Rawson	31
Gavin Griffith-Jones	16	Miriam Tong	32
Libbie Persico	17	Public Art	Back page

1 Michael McCormack

PAINTING

➤ 15 The Parade
Island Bay



Michael is an oil painter with an honours degree in Fine Art – painting, from the Crawford College in Cork, Ireland. His work has always been based on where he lives and his experience of that environment – and as such, is autobiographical. In the ‘90’s he was a plein air painter working on location in various places from Cork, Edinburgh, Cornwall and Hawaii before relocating to Wellington, where he painted from the McCormack Studio Gallery in Island Bay from 2003–2024. Michael continues to paint in his private studio, and can be found at his outlet on The Parade on Saturday mornings.

Michael’s motivation to paint remains a mystery to him, but he is inspired to document his experience of being in a moment and how he got there, in an oil painting. The path is usually of equal importance to the view, while a patch of sunlight is transformative. In the studio he is enamoured by the painting process, the smells and textures of oil paint and trying to make a painting work – from the excitement in the early stages, the frustration when it stops working, to editing and hopeful resolution. It’s 100% about the journey.

www.michaelmccormack.co.nz

2 Our Lady’s Home of Compassion

PHOTOGRAPHY / GLASS

➤ 2 Rhine Street
Island Bay



Please join us at Our Lady’s Home of Compassion for tours of our striking stained-glass windows. The Chapel windows, designed by Island Bay legend and artist John Drawbridge and crafted by Peter Kirby, capture the beauty and peace of our urban monastery.

Tours will include *The Resting Place of Meri Hōhepa Suzanne Aubert* featuring the work of Michael Pervan and Olaf Wehr–Candler.

Thirty-minute tours will take place on:

Sat 13 Sep – 10am, 1pm, or 3pm

Sun 14 Sep – 3pm

Please note the Chapel will be open from 2pm – 4pm on Sunday.

We are also delighted to be hosting Chris McKeown’s exhibition *A Pilgrimage into Awe*, accompanied by a series of talks.

www.compassion.org.nz

3 Chris McKeown

PHOTOGRAPHY

➤ Our Lady's Home of Compassion, 2 Rhine Street, Island Bay



Chris is an avid astrophotographer who spends long nights seeking stars and stillness. By day, he works as a consultant and leadership mentor.

A pilgrimage into awe gathers photographs made during his personal journey of healing. The night sky offered a way to rediscover awe and a connection with something greater than himself. These images are markers of that journey; toward presence, expanded perspective, and wonder.

Recently Chris spoke at Te Papa about the neuroscience of looking up, attention, leadership, and how moving toward awe can foster compassion. During this exhibition Chris will offer a series of talks and an astrophotography workshop for those seeking stillness and wonder through photographing the night sky.

Talks about his photography and the neuroscience of awe will take place:

Sat 13 Sep – 11am and 2pm / Sun 14 Sep at 2pm

Framed and unframed prints will be available to view and buy, with a contribution from profits going to the Our Lady's Home of Compassion.

www.chrismckeown.photography

4 Davina Ewing

MIXED MEDIA / PAINTING

➤ 38 The Parade Island Bay



For the past 28 years Davina has been working as a mixed media artist from her studio in Island Bay. She works with various mediums including paper, wood, clay, acrylics, wire & resin, and is constantly drawn to the relationship between colour, texture, pattern and form found along the South Coast. Her work evolves from a place of intuition and heartfelt connection to our beautiful coastline.

www.instagram.com/davinaewing/

5 Twisted+

by Wellington Handweavers and Spinners Guild

MIXED MEDIA

➤ Presbyterian Church
88 The Parade, Island Bay



Fibre, Mixed Media, Painting, Photography, Sculpture, Fabric, Weaving – we are a co-lab event!

The heart of the Wellington spinning and weaving community beats right here, with three gatherings every month. So it's natural they want to celebrate their finest work. Come and trace the weft and warp of the hand spun, the hand woven, the intricate, the practical. Be open to finding a uniquely individual treasure; much is for sale.

Twisted+ will also showcase other noted South Coast artists: quilters, painters, photographers and crafters. Discover how the 'TWISTED' theme is reworked in a variety of media.

TWISTED+ : testament to the passion within.

Newcomers welcome – the group will be convening at the church on Saturday afternoon, come see what they do!

www.ibpc.org.nz

6 Nicole Miller

PHOTOGRAPHY / PRINT MAKING
/ IMMERSIVE STORYTELLING
(FILM & 360 VIDEO)

➤ Presbyterian Church
88 The Parade, Island Bay



Nicole's photographs and artworks invite you to explore the remarkable diversity of seaweeds and the marine life that thrives within the underwater forests along Wellington's south coast.

The striking colours and intricate textures of seaweeds are a natural canvas for Nicole. In her signature black-and-white photo series, she captures the sculptural elegance of giant kelp in abstract detail, while her colour works celebrate the richness of the marine life these ecosystems support.

The fluidity of movement, the organic forms, and the ever-changing interplay of light, waves, and sea life keep drawing Nicole back beneath the surface. Each dive offers new perspectives and fleeting moments of beauty that she wants to share. Through this work, she hopes to spark a sense of wonder and help others form a lasting connection with the hidden world just beyond our shores.

Art sales support marine conservation initiatives by Explore Your Coast.

www.oceanart.co.nz

7 Edith Diggle

PAINTING

- Presbyterian Church
88 The Parade, Island Bay



Edith has participated successfully in many exhibitions in the past, where she specialised in landscapes that captured the atmosphere and essence of a place, evoking a sense of calmness, giving a place from which to stand, observe, absorb, feel recharged and inspired. This resulted in many commissions. After downsizing to Wellington she now creates smaller paintings, often of native birds, using watercolour on parchment, lightly embossed on the reverse side with wax crayon, blended with lavender oil. Edith will be demonstrating this unique approach at the Presbyterian hall during the exhibition.

Edith is a life member of Titirangi Painters of Auckland and a member of the New Zealand Academy of Fine Arts.

8 Alina Manko

MIXED MEDIA

- Presbyterian Church
88 The Parade, Island Bay
- 15 High Street, Island Bay



Alina is interested in exploring the layers and the surfaces of our existence. Working through the mediums of photography, textile, print and paint she is curious about exploring new ways of seeing and moving, exposing the raw edges and celebrating them.

www.instagram.com/curious_observations/

9 St Sava Serbian Orthodox Church

ICONOGRAPHY

- 75 The Parade
Island Bay



At the end of World War II, many Serbian families arrived in New Zealand between 1948 and 1952 to begin new lives. In Wellington, the Serbian community initially worshipped at Russian and Greek churches. The long-held dream of establishing their own Church Community became a reality in 1968, when the original St Francis de Sales Church (built in 1906) was purchased. Following extensive repairs and renovations, the first Divine Liturgy was served in 1969 – celebrated at what was then the farthest Serbian Orthodox altar from the Fatherland.

The church's interior is noted for its extraordinary beauty, highlighted by a remarkable chandelier with 106 light bulbs. Iconography work has been carried out by the exceptionally talented Anton Markarov. Today, St Sava's continues to be nurtured by the dedication of volunteers and community members. Father Predrag warmly invites you to visit. Open Hours:

Sat 13 Sep – 10am to 4pm / Sun 14 Sep – 1pm to 4pm



Island Bay

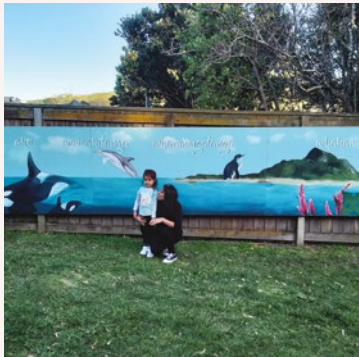
Proud to support

The 2025 South Coast Arts Trail

10 Island Bay Kindergarten

MIXED MEDIA

- 100 Melbourne Road
Island Bay



Island Bay Kindergarten tautoko (supports) tamariki to harness their auahatanga (creativity), to express themselves, solve problems, test out and invent new ways of doing things. At kindy there are many opportunities to engage in art making processes and projects that promote exploring and playing with materials, collaborating with others and discovering unique ways to communicate ideas, emotions and stories. Recent mahi toi (artwork) by tamariki will be on display at the Kindy on Melbourne St.

Kindergarten entrance mural by artist Preehya Patel.

11 Nicola Jackson

PAINTING / PRINT MAKING

- 19 Volga Street
Island Bay



Nicola Jackson is an award winning Artist and Printmaker originally from the UK, now working from her studio in Island Bay. Her works are an extension of her previous career as a successful print designer, selling work to leading companies including Marc Jacobs, Disney and Calvin Klein.

Using multiple layers of screen printing, acrylic, collage or ink, Nicola's work is inspired by her intense love of colour, marks and textures. Her process is highly involved and laborious in the way it builds depth, texture and tactility through the layering techniques she employs. A piece of her art may consist of 5 to 60 layers, and it can be hard to tell which pieces are more minimal in their execution. Consequently, each of Nicola's pieces are truly one-offs and almost impossible to replicate.

Her work can be found in selected galleries in NZ and the QT hotel, Wellington.

www.nicolajacksonart.com

12 Claire Jaycock

PHOTOGRAPHY

- Co-lab with Local.BikeShop
139 The Parade, Island Bay



Open Skate is a project documenting New Zealand's own Roller Derby team and their journey to the 2025 Roller Derby World Cup that took place during July in Innsbruck, Austria. As both a photographer and member of Team New Zealand Roller Derby, Claire was in a unique position to document from the inside using proximity, experience and familiarity to showcase the chaos, athleticism and dedication of the players.

Roller Derby is a full-contact sport played on roller skates by women and gender-diverse athletes around the world. In collaboration with the Local.BikeShop in the Island Bay Village, Claire will be showcasing a selection of images from the project during the South Coast Arts Trail.

www.clairejaycock.nz

13 Emma Smith

PRINT MAKING

- Steer Illustrations
Coucou Cafe
145A The Parade, Island Bay



Emma Smith is a local artist known for the colourful window displays at Wellington's Iko Iko store for the past 11 years.

She is also an illustrator and the founder of Steer Illustrations. She sells her prints at the local cafe Coucou and also on her website. Her art is heavily inspired by nostalgic kiwiana.

You might also spot her murals featured around Wellington City.

www.steerillustrations.com

14 Neil Doherty

PHOTOGRAPHY

- Empire Cinema
214 The Parade, Island Bay



Neil is a born and bred Wellingtonian who loves taking photos of anything and everything. His passion for photography started in his twenties, and he has a particular interest in photographing the Wellington coast, capturing the changing moods as well as birds and action on the water.

Instagram: [@neil9683](https://www.instagram.com/neil9683)

15 Mia Vinaccia

PHOTOGRAPHY

- Empire Cinema
214 The Parade, Island Bay



Mia is currently pursuing her career as a photographer and creative director in London, where she is working alongside agencies, musicians and designers to develop and execute high-quality visuals for editorials and campaigns. She graduated from Massey University in 2020.

www.instagram.com/miavinaccia



Empire Cinema & Eatery

214 The Parade, Island Bay
empirecinema.nz
04 939 7557

16 Andy Spain

PHOTOGRAPHY

- 42 Tiber Street, Island Bay
- Empire Cinema
214 The Parade, Island Bay



This year, alongside work on display at the Empire, Andy Spain opens his home studio. With a background in architectural photography and a deep love for Wellington's built environment, Andy's work captures moody, cinematic moments in urban spaces. His art photography explores themes of place, memory, and atmosphere—often drawing on the stillness of night, the beauty of shadows, and the quiet drama of architecture.

Andy's practice spans fine art prints, moving image, and commissioned photography for architects and designers. He recently exhibited at the National Library and is a finalist at the National Contemporary Art Awards in Hamilton. He creates limited edition prints that are collected both locally and overseas.

Drop by for a chat, a look through the studio, and a chance to see how photography can turn everyday scenes into something quietly powerful. Prints will be available to view and buy.

www.asvisual.nz

17 Nicola Shuttleworth and Simon Morris

PAINTING / PRINT MAKING

➤ 27 Freeling Street
Island Bay



Nicola is a Whanganui-a-Tara-based potter working from her studio in Island Bay, a practice of twenty years making functional ceramic ware to hold and to use.

She believes in living daily life with handmade objects that enrich experiences with friends and family. She loves making stacks, groups and individual pieces using similar forms with warm, natural coloured glazes. Her clay bodies are blended using mainly New Zealand clays, and she makes all her own glazes.

While her usual range is fired in an electric kiln, more recently she and partner Simon Morris have been exploring some wood firing, undertaking a residency at Driving Creek earlier this year. Their Open Studio in Freeling St will include work from this residency as well as work made in Nicola's studio.

www.nicolashuttleworth.co.nz

18 Zoë Isaacs

CERAMICS

➤ 12a Freeling Street
Island Bay



Zoë makes pottery to bring beauty into everyday life. Her work is focused on creating functional pieces that serve a basic need as well as encouraging a little attention and care. She works from her home studio in Island Bay and uses a variety of clays from Aotearoa, thrown using a manual kick wheel. Zoë is always experimenting with new forms, glazes and patterns.

www.zoeisaacs.com

Harcourts

WHERE EVERY MOVE IS A WORK OF ART. FOR THE FULL PICTURE, GIVE ME A CALL.

Jodie HANNA

Licensed Real Estate Consultant
021 100 0412
jodie.hanna@harcourts.co.nz
www.teamharcourts.co.nz

Harcourts Team Group
Team Group Realty Limited Licensed Agent REAA 2008

19 Sarah Nightingale

PRINT MAKING

➤ 31 Ribble Street
Island Bay



Sarah is interested in glimpses and small slices of (usually) urban life, using a process that aims to reflect the aesthetic in the grit, the grunge and the random nature of city living. She has always been drawn to the underwhelming and is particularly inspired by artists who celebrate the ordinary. Her art work is a response to the haphazard layers of different architectural styles in our daily vistas, and the surprises that can sometimes appear in the spaces in between. Her current mixed media prints and collages are inspired by a landscape of old stone, coloured rock and misty woods, sourced from her time in Galicia in 2023, alongside some more current Wellington influenced prints.

Sarah is an art therapist and printmaker, with recent exhibitions with Imprint, Wellington Regional Arts Review and the Toi Open.

www.instagram.com/sarahnightingaleart

20 Brigid Jamieson + Penny Wyatt

PAINTING / MULTIMEDIA

- The Creative Itch Collective
2 Melrose Road, Island Bay



Brigid and Penny are Island Bay-ster artists who warmly invite you to pop into their studio and have a squiz at their paintings and other artistic adventures.

They have successfully exhibited together in galleries and art shows, and are deeply obsessed with many a messy creative endeavour. They tend towards expressionist and multimedia portraits, landscapes and abstracts, often with a smidge of the quirky. Expect colour and playful energetic works. They will even pop the jug on for you!

www.instagram.com/the.creative.itch.collective

21 Kees Busch

PAINTING

- Atelier Kees Busch
12 Mersey Street, Island Bay



Kees has been painting for over twenty five years, the last sixteen from his studio in Island Bay. He uses acrylics on fine canvas and works with much detail, producing about four works per year. Abstract symbols and strong colours are the pictorial language of his paintings. Some images may reoccur, while others are developed for a particular work.

Kees' work is inspired by how dreams can heal and the complexities of relationships. He's also painted the joy of a song floating from a window and the continuation of a matriarchy. All are unseen things, except as conceived on his canvases. Kees' art work wraps abstract form and colour around that which is emotional and invisible. For a moment we glimpse how dreams, memories, and hopes, might look like if they were able to materialise.

Instagram : [@keesartist](https://www.instagram.com/keesartist)

22 St Francis de Sales School / Catholic Church

MIXED MEDIA / PAINTING /
FABRIC / STAINED-GLASS

- Room 4 Art Room
11 Mersey Street St, Island Bay
- St Francis de Sales Catholic Church, 173 Clyde Street



Enter through the beautiful Waharoa, painted by artist Ariki Brightwell with the school children, and through the school foyer where student art will be on display. Visitors are welcome to walk through the school grounds and view artworks from past students. Maps will be provided.

ST FRANCIS DE SALES CATHOLIC CHURCH The stained-glass window depicting St Francis – learned Bishop, Doctor of the Church, and Patron Saint of Journalists – is crafted from vibrant clusters of polyester resin. The designer was L. Taylor of Hampton Ltd, Christchurch. Above the altar, a magnificent mosaic of Christ on the Cross shines with over 135,000 pieces of glass and specially made plastic tiles, creating a work unique to the Island Bay church.

This striking piece was designed by Mr. L. Fone of Hampton Ltd, Christchurch. The church itself was designed by architect Jason King of King and Dawson Architects and constructed in the 1960s. Visitors are welcome to view the church.

23 Joe Bleakley

MIXED MEDIA

An illustrated talk on
The Wellington Sun Festival
(December 1983)

- The Lodge
221 Clyde St, Island Bay



Please arrive 10 minutes before session times and wait at the gate via alleyway on Brighton St. No latecomers. No photos in the studio please.

Joe is a veteran community arts events maker and artist. On his return to Te Whanganui-a-Tara in the early '80s his first foray was a fireworks show on the harbour. Subsequently, with new friends and new momentum the event evolved into The Wellington Sun Festival – a large-scale community event held in Oriental Bay on December 17th, 1983.

For the Arts Trail Joe will present a slideshow and talk covering preproduction through to the finale of the festival. (approx 1hr duration). After the show Joe will be presenting an idea for a new Wellington Festival, and your feedback will be welcome. There will be some prints and drawings for sale.

Session times

Sat 13 Sep – 10am and 4pm

Sun 14 Sep – 10am and 4pm

Audience limit of 40 per session.

Bookings: Please email: joebleakleynz@gmail.com

24 Gavin Griffith-Jones

PAINTING

➤ 43 Brighton Street
Island Bay



Gavin has been an Island Bay local since 2006. He spends a lot of time in the water, on the water, and under the water, and is also fascinated by flight and skies. These perspectives on the south coast inspire him to paint – the wildlife, people, storms, ever-changing skies and seas – moments that will never be repeated.

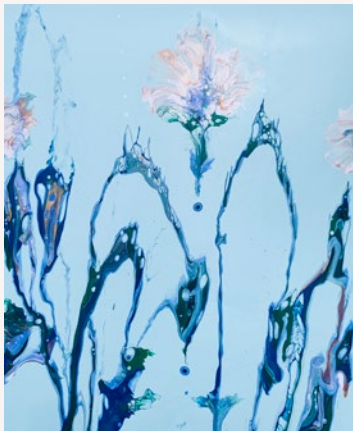
Gavin works in acrylic on canvas and board. He began painting in 2020 during lockdown, something he had been thinking about for a long time. You can see his work online, or at his home in Brighton St during the South Coast Arts Trail.

www.instagram.com/gavingriffithjones

25 Libbie Persico

CERAMICS / PAINTING /
SCULPTURE

➤ 95 Derwent Street
Island Bay



Libbie is the type of artist who loves to play with different materials and ideas.

Her current passion is an exploration of liquid paint where the canvas is laid flat and thinned paints are poured in layers then flicked, stroked, blown, dragged and tilted. It's a balancing act between artist and paint. How far can she push things? When should she leave it alone? The paint then continues to develop over the next few days as it dries, and watching this unfold brings further joy.

The resulting paintings are dreamy fantastical garden scenes with a lively and whimsical mood.

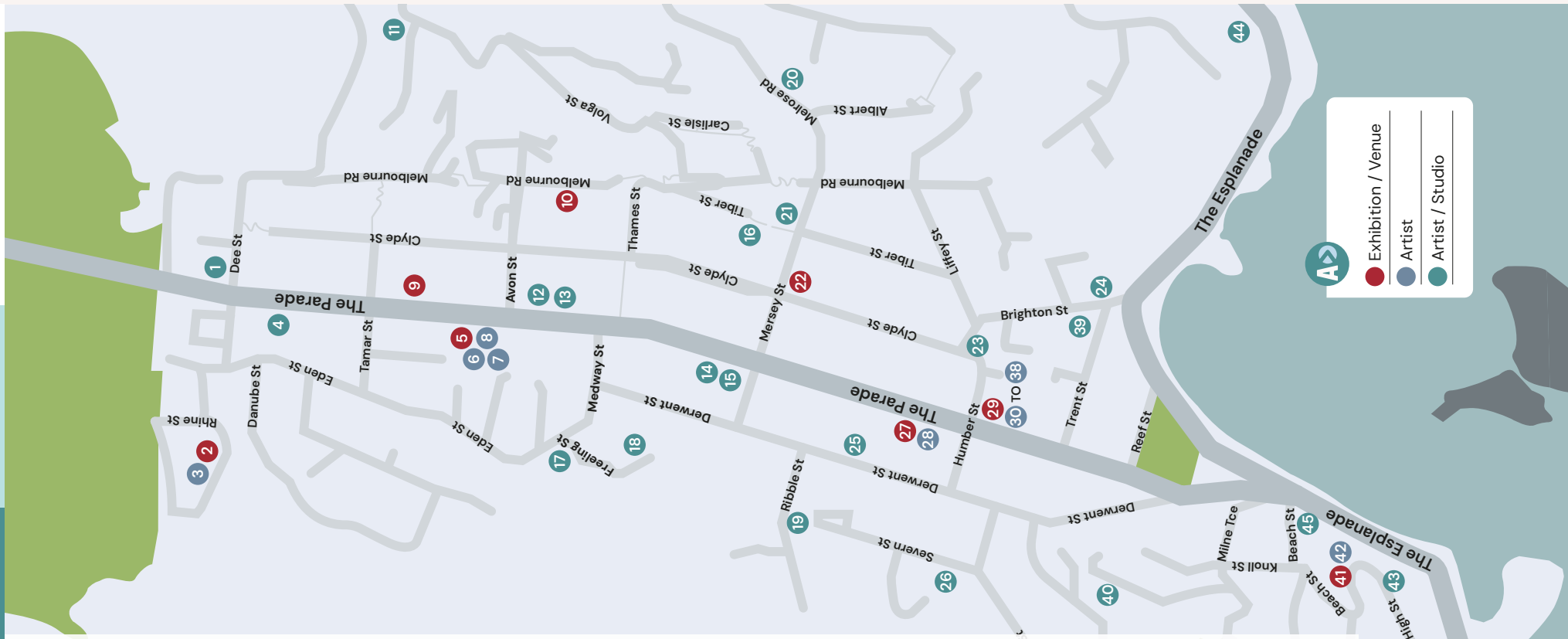
www.instagram.com/libbie_persico_originals



SOUTH COAST ARTS TRAIL

FOLLOW THE TRAIL

- 1 Michael McCormack 15 The Parade
- 2 Our Lady's Home of Compassion 2 Rhine Street
- 3 Chris McKeown 2 Rhine Street
- 4 Davina Ewing 38 The Parade
- 5 Twisted+ Presbyterian Church, 88 The Parade
- 6 Nicole Miller 88 The Parade
- 7 Edith Diggle 88 The Parade
- 8 Alina Manko 88 The Parade
- 9 St Sava Serbian Orthodox Church 75 The Parade
- 10 Island Bay Kindergarten 100 Melbourne Road
- 11 Nicola Jackson 19 Volga Street
- 12 Claire Jaycock 139 The Parade
- 13 Emma Smith Coucou Cafe – 145A The Parade
- 14 Neil Doherty Empire Cinema, 214 The Parade
- 15 Mia Vinaccia Empire Cinema, 214 The Parade
- 16 Andy Spain 42 Tiber Street
- 17 Nicola Shuttleworth & Simon Morris 27 Freeling St.
- 18 Zoë Isaacs 12A Freeling Street
- 19 Sarah Nightingale 31 Ribble Street
- 20 Brigid Jamieson + Penny Wyatt 2 Melrose Road
- 21 Kees Busch 12 Mersey Street
- 22 St Francis De Sales School 11 Mersey Street
- 23 Joe Bleakley 221 Clyde St
- 24 Gavin Griffith-Jones 43 Brighton Street
- 25 Libbie Persico 95 Derwent Street
- 26 Dan Wilkinson Creative 1, 30 Severn Street
- 27 Wellington South Baptist Church 284 The Parade
- 28 Seema Singh & Pritika Narayan 284 The Parade
- 29 St Hilda's Anglican Church Island Bay 311 The Parade
- 30 Jeannette Troon 311 The Parade
- 31 Helen Williamson 311 The Parade
- 32 Charlie Cristi 311 The Parade
- 33 Judith Maxim Art 311 The Parade
- 34 Lesley Moyes 311 The Parade
- 35 Alison Hogg 311 The Parade
- 36 Katie Williams 311 The Parade
- 37 Amber Crossland 311 The Parade
- 38 Noon Kasemsan 311 The Parade
- 39 Juliet Best Studio 4, 4 Trent Street
- 40 Beata Kozłowska 53 Milne Terrace
- 41 Neal Palmer New Abstracts – 15 High Street
- 42 Christine Strang 15 High Street
- 43 Deryn Hardie Boys 25 High Street
- 44 Ruth Copeland 128 The Esplanade
- 45 Ian Logan 302 The Esplanade
- 46 JoElla Gragilla 408 The Esplanade
- 47 Debbie Rawson 174 Ōwhiro Bay Parade
- 48 Miriam Tong 174 Ōwhiro Bay Parade



A

- Exhibition / Venue
- Artist
- Artist / Studio

26 Dan Wilkinson Creative

MIXED MEDIA

➤ 1, 30 Severn Street
Island Bay



Dan has been influenced by the south coast surroundings since becoming affiliated with The Learning Connexion in 1999, when it was located in the former Erskine College buildings. He has maintained mentoring and teaching positions since then and really enjoys guiding people's creative practice alongside his own.

Dan's creativity reflects his surroundings and thoughts about societal and environmental observations as well as experiences. He tries to live life to the full and his art becomes an extension of this.

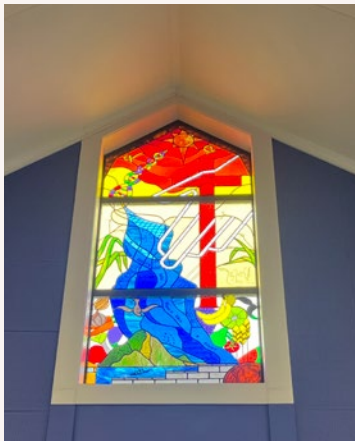
Dan will be sharing a range of work including originals, with prints and cards available to takeaway.

www.instagram.com/wilkinson_creative

27 Wellington South Baptist Church

LEAD LIGHT WINDOW - GLASS

➤ 284 The Parade
Island Bay



Step inside and discover the brilliance of our church's lead light window, a beautiful work of art that weaves light, colour, and story into one. More than decoration, this window is a reflection of community, faith, history, and creativity. Each pane has been designed and placed to capture something of divine mystery and human journey.

Whether you're drawn to stained glass for its artistic detail, spiritual symbolism, or quiet beauty, you're warmly invited to come and see it for yourself. Take a moment to sit, reflect, and let the light speak.

With colouring or window cookie decoration for the young (or young at heart), our doors are open, and you are welcome. Whether you're passing by, exploring the sacred, or simply curious. Come and see what shines through when light meets story.

Session times

Sat 13 Sep – 10am to 2pm / Sun 14 Sep 12:30–2:30pm

www.wsb.org.nz

28 Seema Singh & Pritika Narayan

CERAMICS / MIXED MEDIA /
PAINTING

➤ Wellington South Baptist
Church Hall, 284 The Parade
Island Bay



Seema is a Wellington-based mixed media artist originally from the Fiji Islands. Her artwork draws inspiration from her ancestor's lived experiences and her background in Geography. She works with acrylics, watercolour pencils, metallic pens, traditional materials like turmeric, sindhoor, jute, and saree fabric to create textured, collage-style paintings. These works tell the stories of Girit women, our foremothers, whose histories are often fragmented and emotionally charged.

Alongside Seema's work you'll also see thoughtful ceramic sculptures by Pritika Narayan. Her pottery honours these same Girit women, portraying them with their heads held high, symbols of strength, dignity, and grace in the face of hardship. Through their combined art forms, Seema and Pritika aim to pay tribute to their ancestors and preserve their legacy. Their work is both a celebration and an act of remembrance.

www.expressionsbyseema.art/home

29 St Hilda's Anglican Church Island Bay

MIXED MEDIA

➤ 311 The Parade
Island Bay



St Hilda's has faced the challenges of earthquake strengthening and not only come out glowing but also award winning. The new facade is described as "a golden tessellating veil, adorned with a pattern that represents the history, future, people, and essence of the place and the church".

Be sure to come along and enjoy an inspiring range of local art, curated this year by Jeannette Troon, plus a musical recital late Sunday afternoon.

Exhibition opening times

Sat 13 Sep – 10am to 4pm / Sun 14 Sep 12pm to 4pm

Music recital – for tickets see page 23

Sun 14 Sep – 4:30pm

30 Jeannette Troon

PAINTING / PRINT MAKING

➤ St Hilda's Church
311 The Parade, Island Bay



Jeannette has utilised her creative skills in mental health services, as a designer of children's spaces, as a relationship manager in the education system and most recently, through her exploration of painting with oils.

She enjoys the challenge of capturing people and the occasional pet, alongside the lush coastal and bush clad landscapes of Te Whanganui-a-Tara. She's inspired by the evocative work of many classical impressionists and contemporary realists.

Jeannette passionately believes that creativity is the foundation of our wellbeing as individuals and as a community, and was part of the team that established the Island Bay School Art Auction in 2005. She continues to learn from communities at Inverloch Art School, the Wellington School of Drawing and the Evans Bay Art Group.

www.instagram.com/jeannettetroon_artist

31 Helen Williamson

PAINTING / DRAWING

➤ St Hilda's Church
311 The Parade, Island Bay



Helen creates expressive, semi-abstract paintings that pulse with energy and emotion. Her creative practice is shaped by a deep appreciation for fleeting moments—when light, colour, and form converge in an evocative and joyful dance. Whether capturing plants and flowers at their peak of spring enthusiasm, the rich textures of local landscapes, or the colourful layers of a bird's plumage, she seeks to express the beauty in these transient scenes.

Helen holds a Degree in Fine Art and has exhibited widely in Wellington and Auckland, winning the Wellington Emerging Artist of the Year Award in 2011. Her work is also held in collections in New York, Pennsylvania and New Jersey, USA. For the past 15 years, she has lived in Island Bay with her husband and two children, continually inspired by the ever-changing light and dynamic weather of Wellington's coastline.

www.instagram.com/helenwilliamson_paint

ST HILDA'S AND KAVANAH PRODUCTIONS PRESENT

Recital

KREISLER - 150TH ANNIVERSARY RECITAL

YURY GEZENTSVEY
- VIOLIN
KIRSTEN SIMPSON-ROBERTSON
- PIANO

SUNDAY 14TH
SEPTEMBER
4.30PM

ST HILDA'S
311 THE PARADE
ISLAND BAY

AN HOUR RECITAL OF FIFTEEN SHORT PIECES COMPOSED BY ONE OF THE GREATEST VIOLINISTS OF ALL TIME, FRITZ KREISLER, PLAYED BY THE RENOWNED VIOLINIST YURY GEZENTSVEY

TICKETS \$15 - \$25 BOOK AT **HUMANITIX**

Tickets can be purchased through Humanitix, with doorsales available if not sold out prior.



SCAN QR CODE
TO PURCHASE TICKETS

32 Charlie Cristi

GRAPHITE DRAWING

➤ St Hilda's Church
311 The Parade, Island Bay



Charlie is an artist, education specialist, and mother of two young creatives. Together, they explore the wild beauty of Wellington's south coast — a place of constant change and inspiration. Her work is a reflection of the joy and happiness found in the simplicity of everyday life: the squeal of a child chasing a bubble, the feeling of flying at the top of a swing, the fleeting form of a cloud before it transforms into something entirely new.

These small, passing moments often hold the deepest meaning. By focusing intentionally on them, Charlie aims to celebrate the beauty that exists right in front of us — if we choose to notice it. Her art is about pausing, observing, and honoring the ordinary as something extraordinary. In a world that moves quickly, she's drawn to what is quiet, joyful, and real — moments that may be brief, but stay with us.

www.instagram.com/charliecristiartist

33 Judith Maxim Art

PAINTING / PRINT MAKING

- ▶ St Hilda's Church
311 The Parade, Island Bay



Much of what Judith paints is either in her close surroundings or from her imagination. She likes to experiment with pattern and colour and strives to capture the essence of what she sees. These pieces here represent this well.

Judith works in a range of mediums – often watercolour and ink, sometimes oil – and was introduced to print making at the Learning Connection. Her prints are mostly woodblock but more recently she has been making her plates out of Tetra Pak cartons.

www.judithmaximart.co.nz

34 Lesley Moyes

PAINTING

- ▶ St Hilda's Church
311 The Parade, Island Bay
- ▶ 15 High Street, Island Bay



Lesley attended Art school in England. In New Zealand she worked for Learning Media (publishers of school material for the Education Department) as an illustrator/art editor and also worked freelance as a children's book illustrator.

Lesley is now focused on her work as a painter.

35 Alison Hogg

PAINTING / PRINT MAKING

- ▶ St Hilda's Church
311 The Parade, Island Bay



Alison's work is an exploration of printmaking and painting using both canvas and paper, alongside printing inks and other media, dovetailing her fine art printmaking experience and art practice. It is hands-on, responsive and human. Alison is from Wellington and has lived on the South Coast for 19 years, raising her family (and dog) here. She has also spent time living in the UK working and gaining her Fine Art degree in Printmaking before returning to the fantastic blustery south coast.

[@alisonhogg_art](https://www.instagram.com/alisonhogg_art)

36 Katie Williams

PAINTING

- ▶ St Hilda's Church
311 The Parade, Island Bay
- ▶ 15 High Street, Island Bay



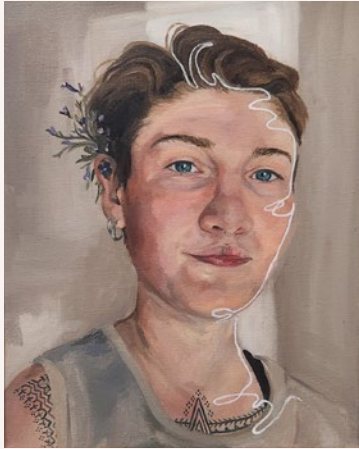
Katie has always made a living in Graphic Design and Advertising but is revisiting her first love of art. She majored in print making at art school, and consequently, aspects of this discipline often appear within her work, which can sometimes resemble woodcuts.

Katie is a keen mountain biker and loves being immersed in the gorgeous bush that Aotearoa has to offer. The piece 'Organic 1' is a tribute to the bush and the life force that flows through it.

37 Amber Crossland

PAINTING / PRINT MAKING / ILLUSTRATION

- ▶ St Hilda's Church
311 The Parade, Island Bay



Amber is a multidisciplinary artist, illustrator and designer. She works across mediums in fine line pen, continuous line, print, and oil painting. Recently she has been exploring oil portraiture and landscapes informed by her surroundings. She's curious about the concept of identity and often finds it woven into her work.

[@curious.and.continuous](#)

38 Noon Kasemsan

PAINTING

- ▶ St Hilda's Church
311 The Parade, Island Bay



Noon has been painting for 16 years and is self-taught, with the help of evening classes and community art schools in Christchurch, Auckland, Nelson, and Wellington. Her work is driven by colour, mood, and the play of light and shadow in the everyday. A patch of sunlight on a wall, the curve of a shadow at dusk—these are the things that catch her eye and stir something deeper. She paints what she sees, but more than that, she paints what she feels in that moment. Each piece is a reflection of mood as much as form. Perhaps when you look at her work, you will feel something too.

[@noon.kasemsan.art](#)



Stop for a break and support our local cafes and shops as you enjoy the South Coast Arts Trail.

Bluebell Cafe – 142 The Parade

Coucou – 145 The Parade

White Room Gallery – 147 The Parade

New World Island Bay – 6 Medway Street

Natty – 206 The Parade

Empire Cinema & Eatery – 214 The Parade

Parla – 216 The Parade

Enjoy more as you explore the trail.



▶ ISLAND BAY. WGN. 6023



▶ 13 – 14 SEPTEMBER 2025

39 Juliet Best

PAINTING

➤ Studio 4
4 Trent Street, Island Bay



Juliet's Aotearoa-inspired landscapes are produced using jewel-like paint palettes, earthy organic tones and textured land-forms with hand-polished gold leaf.

Original artworks are beautifully float-mounted in lacquered New Zealand-made timber frames and ready to hang. Every piece is filled with light, movement and just a touch of gold leaf luxury!

All originals are protected with high-grade UV resistant fine art varnish.

Limited edition prints are on archival quality paper created with ultra protective inks.

www.julietbest.com

40 Beata Kozłowska

PAINTING

➤ 53 Milne Terrace
Island Bay



Beata Kozłowska is a Wellington-based artist originally from Poland. Her abstract paintings explore colour, form, and space in constant flux, layering vibrant planes that shift between clarity and concealment. Each work invites viewers to pause, navigate, and create a personal dialogue with the painting. She studied Fine Art in London, earning an MFA from Chelsea College of Art and a BA from Camberwell College of Art, UAL in London (UK) and also holds a Master's Degree in Literature from the University of Warsaw. Kozłowska has exhibited internationally and participated in residencies across Europe, with recent shows in TwentySix Gallery Wellington.

www.beatakozłowska.com

41 Neal Palmer

PAINTING

➤ 15 High Street
Island Bay



New Abstracts – A group show by local artists.

Neal moved from London to Wellington in 1987 and has had a long career as an exhibiting painter and photographer and as a community arts worker. Neal is curating a show of abstract paintings.

Artists exhibiting with Neal in New Abstracts include:

- Ian Logan
- Lesley Moyes
- Katie Williams
- Alina Manko
- Christine Strang

42 Christine Strang

PAINTING / MIXED MEDIA

➤ 15 High Street
Island Bay



Christine Strang has exhibited extensively, in three solo shows and a multitude of group shows in New Zealand. She created the site decorations at the 1998 World Dragon Boat Championship on the Wellington Wharf. Her work has been covered in newspapers and on television. Christine served on a Creative NZ local funding scheme and is a member of the Wellington Art Club. She has painted abstract, landscape, and portraiture, working primarily in acrylic. Christine has also exhibited in the South Coast Arts Trail before.

43 Deryn Hardie Boys

PAINTING / PHOTOGRAPHY

- 25 High St
Island Bay



Living on the South Coast provides Deryn with a constant source of inspiration. She tries to capture the changing light, sea and moods of the coast in her watercolours.

derynhardieboys.weebly.com

44 Ruth Copeland

PRINT MAKING

- Top flat, 128 The Esplanade
Island Bay



Ruth is a screen print artist living in a tiny home perched on the Esplanade, along the south coast. Her windows hover directly over the ocean, offering a constant kaleidoscope of colour, light, and movement. Each shift in the sea and sky brings new inspiration — the daily rhythms of nature are her muse and her joy.

Much of Ruth's work celebrates the iconic Island Bay coastline, a place of wild energy and quiet beauty that she feels deeply connected to. The silhouette of Tapu Te Ranga Island, the shimmer of tidal light, or the pull of deep blues are often found in her prints.

Ruth's prints may spark a moment of recognition — and a fresh appreciation for the beauty that surrounds us.

When visiting come up the double red gates to the left of the front house, I am in the tiny home behind. Be very careful on the steep stairs, use the rope handrail.

www.facebook.com/EsplanadeArts

45 Ian Logan

CERAMICS / MIXED MEDIA /
PAINTING, PHOTOGRAPHY /
SCULPTURE / PRINT MAKING

- Studio Te Mapunga
302 The Esplanade, Island Bay
- 15 High Street
Island Bay
- Bluebelle Cafe
Island Bay



Ian has long hankered after a space to properly showcase his father John Logan's large scale oil paintings.

In 1950 John Logan returned from medical study in the UK, settling in a house overlooking Island Bay, then alive with fishing boats, where he developed his art encouraged by legendary artist/mentor Paul Olds. These paintings are of historical and artistic value.

Now his son Ian, a renowned Island Bay Artist and musician, has found the perfect location to show his work, just a few doors from his family home. The gallery is located in the former "South Coast Gallery" owned by the Drawbridge family and has been renamed Te Mapunga for this time period, in recognition of the original Māori settlement on the coast.

Ian will show work that counterpoints his father's creations. Joining them will be other talented artistic duos spanning a wide variety of styles and media — but all connected to each other by family and/or inspiration.

www.ianloganart.com

46 JoElle Gragilla

PAINTING / ART WORKSHOP
AND STUDIO

- South Coast Studio, Unit 1
408 The Esplanade, Island Bay



South Coast Studio is fast becoming a creative hub in Island Bay, offering a welcoming space for people to learn, create, and connect through art. They run weekly classes, weekend workshops in other media and crafts, and art and yoga retreats in scenic locations around Aotearoa. Regular workshops include watercolour, life drawing, drawing, painting — and soon, open studio sessions and art support. The studio also offers workshops for holidays and special events.

Founded by JoElle Gragilla, a practising artist with a strong background in art education, SCS was built on her passion for sharing art with others. The focus is on practical learning in a relaxed setting. Whether you're picking up a brush for the first time or returning to a creative practice, SCS offers a place to switch off from the daily grind, build skills, and enjoy the mental reset that comes with making art.

Creative activity has been shown to reduce stress, improve focus, and release endorphins — something many participants say they notice after a class.

www.southcoaststudionz.co.nz

47 Debbie Rawson

CERAMICS / PAINTING / PHOTOGRAPHY /
SCULPTURE / FABRIC

- Pariwhero Red Rocks Gallery,
174 Ōwhiro Bay Parade
Ōwhiro Bay



The gallery has been open for three years now and was born on the first day of the first South Coast Arts Trail, 2022. This iconic building has become an artistic hub where artists, photographers, ceramicists and sculptors can share their work and enjoy ongoing collaborations.

Gallery owner Debbie Rawson is a musician and fine art photographer and her specialities are documentary, street photography, landscape and portraiture.

Currently featuring 15 other different local artists, the gallery also has a fine collection of jewellery, photo books, gifts and cards.

www.pariwherogallery.co.nz

48 Miriam Tong

MIXED MEDIA

- Pariwhero Red Rocks Gallery,
174 Ōwhiro Bay Parade
Ōwhiro Bay



Miriam is a Wellingtonian, artist and mother. She is a lover of our built heritage and the way buildings anchor us in a place. She is also a trap-clearing, tree-planting, bird-watching, nature-loving member of the Southern Environmental Association. She is ANCHORED HERE.

Miriam has been drawing homes and buildings for 10 years. She loves to capture the lives lived in places, through the inclusion of small, meaningful details. She works with fine ink pens, sometimes using an Indian ink wash. In this South Coast Collection she has enjoyed re-creating her pen style using the free-embroidery function on her sewing machine.

The South Coast of Wellington feels special to Miriam. All the quirky and interesting homes which nestle into the hills and stand strong in the face of a southerly storm, remind her of her own decision ... to be ANCHORED HERE.

www.instagram.com/miriamtongart

Acknowledgements

On behalf of the South Coast Arts Trail Committee, we extend our sincere gratitude to all those who have contributed their time, talent, and support to the success of this year's South Coast Arts Trail.

South Coast Arts Trail Committee

Bruce Gadd, Jeannette Troon,
Wanda Lepionka, Loredana Unsworth
and Francesca De Gregorio

South Coast Business & Promotions Association Inc.

Creative

Edwin Hooper – Design Director for brand development and marketing materials

Artist Film Series

Craftinc. Films – Artist short film series 'Creativity Around Every Corner' in support of the South Coast Arts Trail, directed and produced by Wanda Lepionka and co-produced by David Strong

Victoria University of Wellington Te Herenga
Waka Miramar Creative Centre

Victoria University of Wellington Master of
Fine Arts in Film graduates Mateusz Mendrun
and Sophie Hampson

Coucou – Film crew catering

Community Groups and Leaders

Our Lady's Home of Compassion –
Sister Sue Cosgrove, Kirsty Prentice,
Anya Herval, Jo White

St Sava Serbian Orthodox Church
– Father Predrag Grubacki

Island Bay Presbyterian Church
– Helen Scobie and Nathan Parry

St Francis de Sales Catholic Church
– Father Doug Shepherd

Wellington South Baptist Church
– Margaret Crisp

St Hilda's Island Bay Anglican Church
– Rev. Mark Henderwood

Curators

Jeannette Troon – St Hilda's Exhibition;
Empire Cinema & Eatery

Island Bay Kindergarten – Colleen Luckin

Usha Stewart – St Francis de Sales School

Ian Logan – Blue Bell Café Exhibition,
Te Mapunga Gallery

Gail Mahoney – Twisted+ Exhibition,
Island Bay Presbyterian Church

Neal Palmer – New Abstracts

Special Thanks

Colin Feslier – Art and Talk Tour

Generous Koha Contributors

Kees Busch, Dysart Family, JoElle Gragilla,
Judith Maxim Art, Miriam Tong, Andy Spain

And finally, a huge thanks to all participating artists, artisans, and supporters whose creativity, generosity, and community spirit continue to bring the South Coast Arts Trail to life.



Art and Talk Tour

Colin Feslier – Chair of the Southern Bays Historical Society, is offering free guided public art tours. On Saturday 13 Sept. and/or Sunday 14 Sept. starting at 2pm, Colin will lead a tour of Island Bay's public art, starting outside the Island Bay Library.

Colin has extensive knowledge of the area and a strong background in local history. If you're interested in joining an Art and Talk tour of public art with some history from our wonderful South Coast, please register here:

www.southcoastartstrail.co.nz

Tours will take roughly 2.5 hours

Public Art

LOCATION	ARTISTS
12 Mersey St Substation Mural	Dan Mills
Clyde St – The Parade Public Walkway	Greta Menzies, school children of Island Bay
Medway St Public Loo	Gina Keil
Granville site wall mural	Ellen Coup
Thirsty Liquor wall mural	The Island Bay Arts and Craft Society
Shetland Centenary Memorial Mural, The Esplanade Shorland Park	Margaret Tolland for Shetland Society and Wellington City Council
Community Centre sculpture	Aaron Frater
St Sava Serbian Orthodox Church	Anton Makarov
St Francis de Sales School waharoa	Ariki Brightwell
St Francis de Sales Catholic Church mosaic and windows	Jason King, King and Dawson architects
Our Lady's Home of Compassion stained glass windows	John Drawbridge
Island Bay Medical Centre stained glass door	John Drawbridge
Gaia Sculpture, 302 The Esplanade	Tanya Ashken
Poetry and whakatauki on the pavements	Robin Hyde, Anne Kennedy, Brian Sutton-Smith, Bruce Hirini Smith
The Parade/Humber St building mural	Michael McCormack
Bus Shelter Art, Island Bay village	Wellington Southern Bays Historical Society and Wellington City Council
Island Bay Kindergarten fence mural	Preehya Patel
Island Bay Playcentre fence mural	Chris Edwards, Alana Spragg, Nikki Slade Robinson
Melbourne St Walkway – Te Uruhau Pa Pouwhenua	Rangi Hetet, Sonny Davis
Shorland Park – Te Mapunga Kainga Pouwhenua	Rangi Hetet, Sonny Davis
Tawatawa Reserve, Owhiro Bay – Te Rauparaha Pouwhenua	Matahi Brightwell
St Hildas Anglican Church Facade	First Light Studio
Unichem Chemist Mural	Ghstie, with Island Bay youth and Wellington City Council
Frenzy Sculpture, Red Rocks	Colin Webster-Watson



southcoastartstrail.co.nz



A FREE EVENT



FOLLOW THE TRAIL



WGN. 6023

